

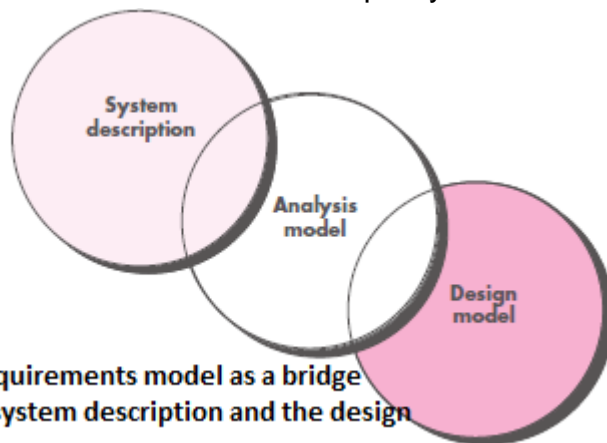
# UNIT – 3

## 3.1 REQUIREMENTS ANALYSIS

Requirements analysis results in the specification of software's operational characteristics, indicates software's interface with other system elements, and establishes constraints that software must meet. Requirements analysis allows you to elaborate on basic requirements established during the inception, elicitation, and negotiation tasks that are part of requirements engineering. The requirements modeling action results in one or more of the following types of models:

- Scenario-based models of requirements from the point of view of various system “actors”
- Data models that depict the information domain for the problem
- Class-oriented models that represent object-oriented classes (attributes and operations) and the manner in which classes collaborate to achieve system requirements
- Flow-oriented models that represent the functional elements of the system and how they transform data as it moves through the system
- Behavioral models that depict how the software behaves as a consequence of external “events”

These models provide a software designer with information that can be translated to architectural, interface, and component-level designs. Finally, the requirements model provides the developer and the customer with the means to assess quality once software is built.



**Fig 6.1: The requirements model as a bridge between the system description and the design model**

Overall Objectives and Philosophy: Throughout requirements modeling, your primary focus is on *what*, not *how*. The requirements model must achieve three primary objectives: (1) to describe what the customer requires, (2) to establish a basis for the creation of a software design, and (3) to define a set of requirements that can be validated once the software is built. The analysis model bridges the gap between a system-level description that describes overall system or business functionality as it is

achieved by applying software, hardware, data, human, and other system elements and a software design This relationship is illustrated in Figure 6.1

Analysis Rules of Thumb: *Arlow* and *Neustadt* suggest a number of worthwhile rules of thumb that should be followed when creating the analysis model:

- The model should focus on requirements that are visible within the problem or business domain. The level of abstraction should be relatively high. “Don’t get bogged down in details” that try to explain how the system will work.
- Each element of the requirements model should add to an overall understanding of software requirements and provide insight into the information domain, function, and behavior of the system.
- Delay consideration of infrastructure and other nonfunctional models until design. That is, a database may be required, but the classes necessary to implement it, the functions required to access it, and the behavior that will be exhibited as it is used should be considered only after problem domain analysis has been completed.
- Minimize coupling throughout the system. It is important to represent relationships between classes and functions. However, if the level of “interconnectedness” is extremely high, effort should be made to reduce it.
- Be certain that the requirements model provides value to all stakeholders. Each constituency has its own use for the model. For example, business stakeholders should use the model to validate requirements; designers should use the model as a basis for design; QA people should use the model to help plan acceptance tests.
- Keep the model as simple as it can be. Don’t create additional diagrams when they add no new information. Don’t use complex notational forms, when a simple list will do.

Domain Analysis: The analysis patterns often reoccur across many applications within a specific business domain. If these patterns are defined and categorized in a manner that allows you to recognize and apply them to solve common problems. This improves time-to- market and reduces development costs.

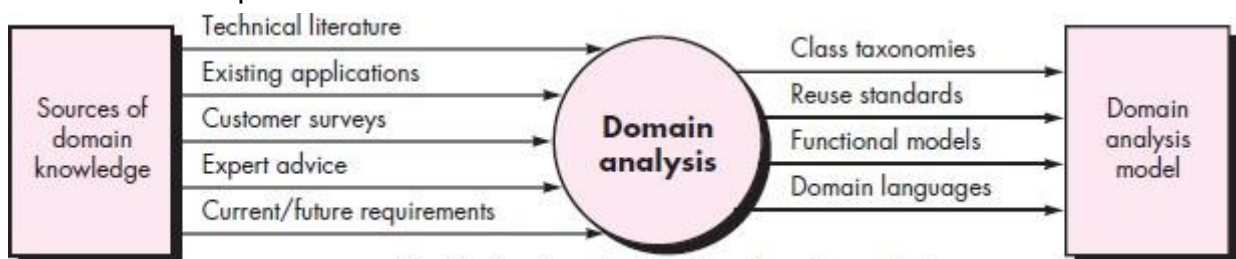


Fig 6.2: Input and output for domain analysis

Domain analysis doesn’t look at a specific application, but rather at the domain in which the application resides. The intent is to identify common problem solving elements that are applicable to all applications within the domain. Domain analysis may be viewed as an umbrella activity for the software process. Figure 6.2 illustrates key inputs and outputs for the domain analysis process. Sources of domain knowledge are surveyed in an attempt to identify objects that can be reused across the domain.

Requirements Modeling Approaches: One view of requirements modeling, called structured analysis, considers data and the processes that transform the data as separate entities. Data objects are modeled in a way that defines their attributes and relationships. Processes that manipulate data objects are modeled in a manner that shows how they transform data as data objects flow through the system.

A second approach to analysis modeling, called object-oriented analysis, focuses on the definition of classes and the manner in which they collaborate with one another. UML and the Unified Process are predominantly object oriented.

Each element of the requirements model (Figure 6.3) presents the problem from a different point of view. Scenario-based elements depict how the user interacts with the system and the specific sequence of activities that occur as the software is used.

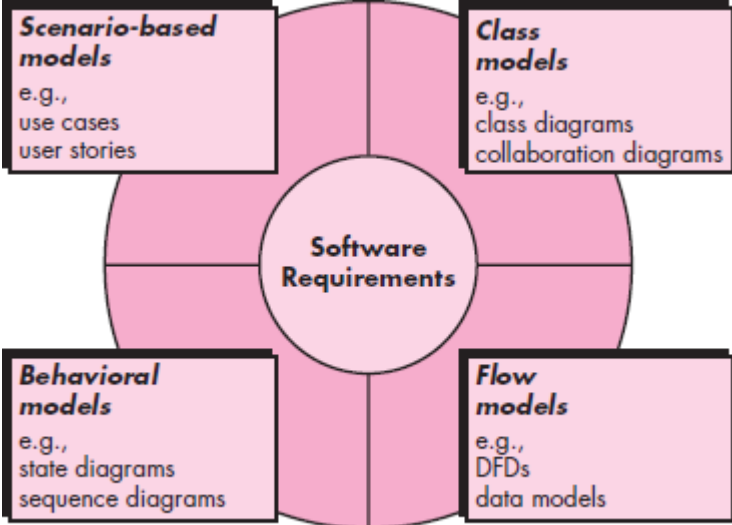


Fig 6.3: Elements of Analysis model

Class-based elements model the objects that the system will manipulate, the operations that will be applied to the objects to effect the manipulation, relationships between the objects, and the collaborations that occur between the classes that are defined. Behavioral elements depict how external events change the state of the system or the classes that reside within it. Finally, flow-oriented elements represent the system as an information transform, depicting how data objects are transformed as they flow through various system functions. *Analysis modeling* leads to the derivation of each of these modeling elements. However, the specific content of each element may differ from project to project.

## 3.2 SCENARIO-BASED MODELING

Requirements modeling with UML begins with the creation of scenarios in the form of use cases, activity diagrams, and swimlane diagrams.

Creating a Preliminary Use Case: A use case describes a specific usage scenario in straightforward language from the point of view of a defined actor. But how do you know (1) what to write about, (2) how much to write about it, (3) how detailed to make your description, and (4) how to organize the description?

What to write about? The first two requirements engineering tasks—inception and elicitation—provide you with the information you'll need to begin writing use cases. Requirements gathering meetings, QFD, and other requirements engineering mechanisms are used to identify stakeholders, define the scope of the problem, specify overall operational goals, establish priorities, outline all known functional requirements, and describe the things (objects) that will be manipulated by the system.

To begin developing a set of use cases, list the functions or activities performed by a specific actor. You can obtain these from a list of required system functions, through conversations with stakeholders, or by an evaluation of activity diagrams developed as part of requirements modeling.

Refining a Preliminary Use Case: A description of alternative interactions is essential for a complete understanding of the function that is being described by a use case. Therefore, each step in the primary scenario is evaluated by asking the following questions.

- Can the actor take some other action at this point?
- Is it possible that the actor will encounter some error condition at this point? If so, what it be?
- Is it possible that the actor will encounter some other behavior at this point. If so, what it be?

Answers to these questions result in the creation of a set of secondary scenarios that are part of the original use case but represent alternative behavior.

Can the actor take some other action at this point? The answer is “yes.”

Is it possible that the actor will encounter some error condition at this point? Any number of error conditions can occur as a computer-based system operates.

Is it possible that the actor will encounter some other behavior at this point? Again the answer to the question is “yes.”

In addition to the three generic questions suggested, the following issues should also be explored:

- Are there cases in which some “validation function” occurs during this use case?

This implies that validation function is invoked and a potential error condition might occur.

- Are there cases in which a supporting function (or actor) will fail to respond appropriately? For example, a user action awaits a response but the function that is to respond times out.

- Can poor system performance result in unexpected or improper user actions?

Writing a Formal Use Case: The informal use cases presented are sometimes sufficient for requirements modeling. However, when a use case involves a critical activity or describes a complex set of steps with a significant number of exceptions, a more formal approach may be desirable.

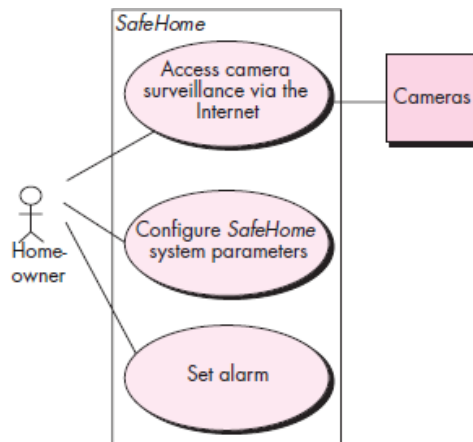


Fig 6.4: Preliminary use-case diagram for saftwHome system

### 3.3 UML MODELS THAT SUPPLEMENT THE USE CASE

A broad array of UML graphical models are as follows

Developing an Activity Diagram: The UML activity diagram supplements the use case by providing a graphical representation of the flow of interaction within a specific scenario. Similar to the flowchart, an activity diagram uses rounded rectangles to imply a specific system function, arrows to represent flow through the system, decision diamonds to depict a branching decision and solid horizontal lines to indicate that parallel activities are occurring. An activity diagram for the ACS-DCV use case is shown in Figure 6.5.

Swimlane Diagrams: The UML swimlane diagram is a useful variation of the activity diagram and allows you to represent the flow of activities described by the use case and at the same time indicate which actor or analysis class has responsibility for the action described by an activity rectangle. Responsibilities are represented as parallel segments that divide the diagram vertically, like the lanes in a swimming pool. Refer Figure 6.6.

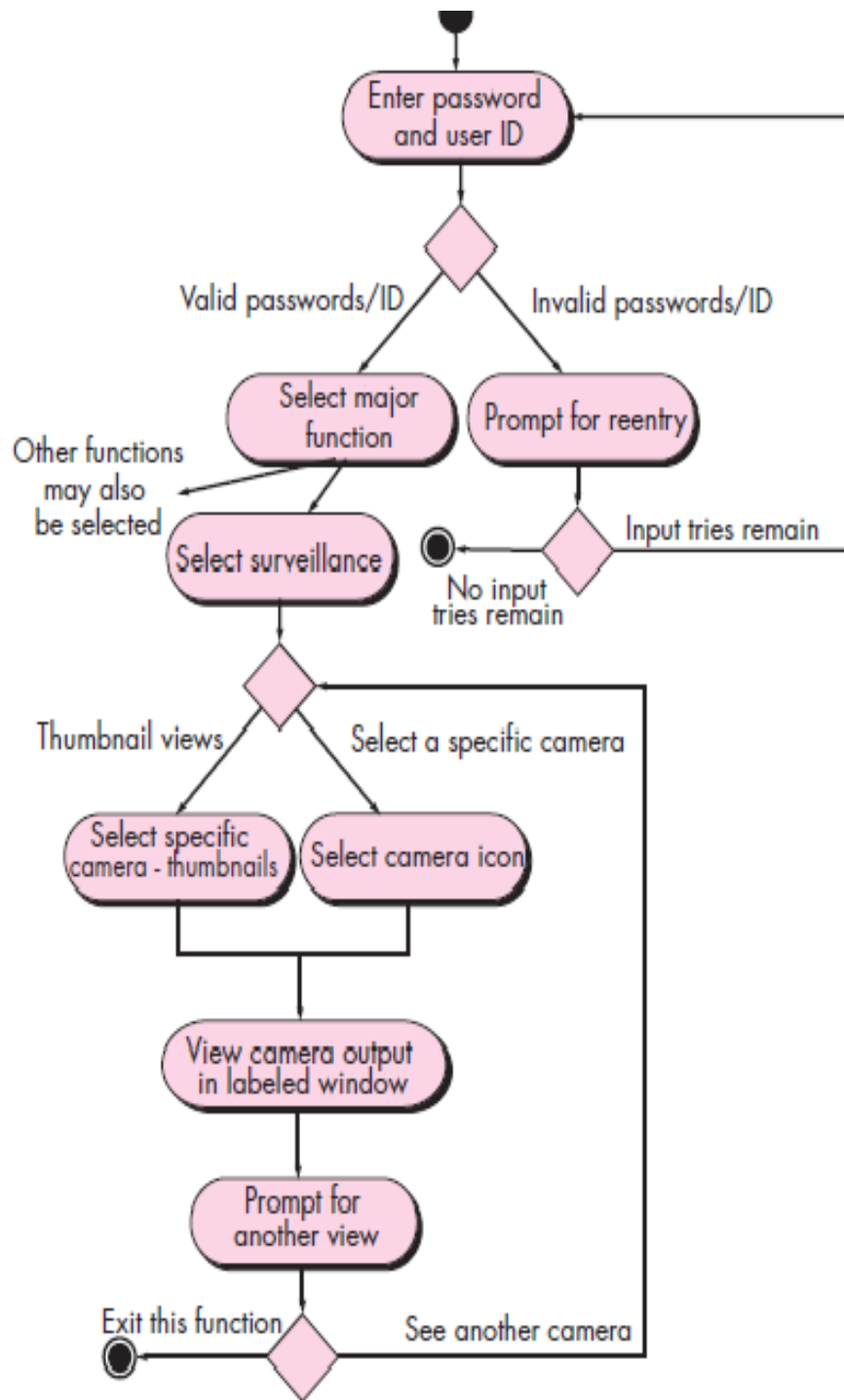
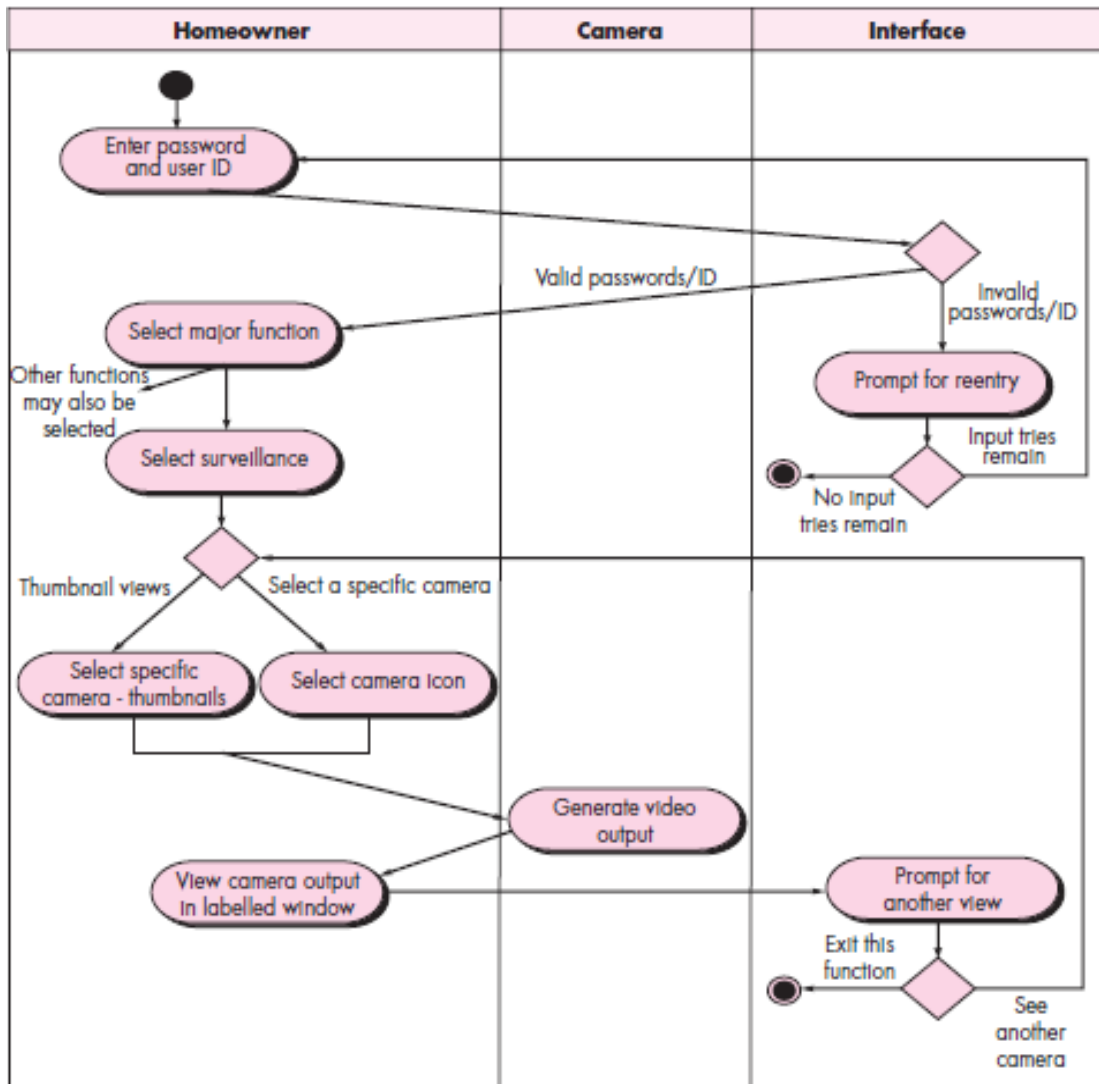


Fig 6.5: Activity diagram for Access Camera surveillance via Internet display cams

**Fig 6.6:** Swimlane diagram for Access camera surveillance via the Internet—display camera views function



### 3.4 DATA MODELING CONCEPTS

If software requirements include the need to create, extend, or interface with a database or if complex data structures must be constructed and manipulated, the software team may choose to create a data model as part of overall requirements modeling. A software engineer or analyst defines all data objects that are processed within the system, the relationships between the data objects, and other information that is pertinent to the relationships. The entity-relationship diagram (ERD) addresses these issues and represents all data objects that are entered, stored, transformed, and produced within an application.

Data Objects: A data object is a representation of composite information that must be understood by software. Therefore, width (a single value) would not be a valid data object, but dimensions (incorporating height, width, and depth) could be defined as an object.

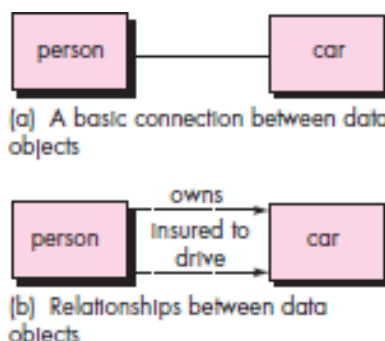
A data object can be an external entity (e.g., anything that produces or consumes information), a thing (e.g., a report or a display), an occurrence (e.g., a telephone call) or event (e.g., an alarm), a role (e.g., salesperson), an organizational unit (e.g., accounting department), a place (e.g., a warehouse), or a structure (e.g., a file). The description of the data object incorporates the data object and all of its attributes.

A data object encapsulates data only—there is no reference within a data object to operations that act on the data.

Data Attributes: Data attributes define the properties of a data object and take on one of three different characteristics. They can be used to (1) name an instance of the data object, (2) describe the instance, or (3) make reference to another instance in another table. In addition, one or more of the attributes must be defined as an identifier—that is, the identifier attribute becomes a “key” when we want to find an instance of the data object. In some cases, values for the identifier(s) are unique, although this is not a requirement.

Relationships: Data objects are connected to one another in different ways. Consider the two data objects, person and car. These objects can be represented using the simple notation illustrated in Figure 6.8a. A connection is established between person and car because the two objects are related. But what are the relationships? To determine the answer, you should understand the role of people (owners, in this case) and cars within the context of the software to be built. You can establish a set of object/relationship pairs that define the relevant relationships. For example,

- A person owns a car.
- A person is insured to drive a car.



**Fig 6.8: Relationships between data objects**

The relationships own and insured to drive define the relevant connections between person and car. Figure 6.8b illustrates these object-relationship pairs graphically. The arrows noted in Figure



6.8b provide important information about the directionality of the relationship and often reduce ambiguity or misinterpretations.

### 3.5 CLASS-BASED MODELING

Class-based modeling represents the objects that the system will manipulate, the operations that will be applied to the objects to effect the manipulation, relationships between the objects, and the collaborations that occur between the classes that are defined. The elements of a class-based model include classes and objects, attributes, operations, class responsibility, collaborator (CRC) models, collaboration diagrams, and packages.

#### Identifying Analysis Classes

Classes are determined by underlining each noun or noun phrase and entering it into a simple table. If the class (noun) is required to implement a solution, then it is part of the solution space; otherwise, if a class is necessary only to describe a solution, it is part of the problem space.

Analysis classes manifest themselves in one of the following ways:

- External entities that produce or consume information to be used by a computer-based system.
- Things (e.g., reports, displays, letters, signals) that are part of the information domain for the problem.
- Occurrences or events (e.g., a property transfer or the completion of a series of robot movements) that occur within the context of system operation.
- Roles (e.g., manager, engineer, salesperson) played by people who interact with the system.
- Organizational units (e.g., division, group, team) that are relevant to an application.
- Places (e.g., manufacturing floor or loading dock) that establish the context of the problem and the overall function of the system.
- Structures (e.g., sensors, four-wheeled vehicles, or computers) that define a class of objects or related classes of objects.

specifying Attributes: Attributes are the set of data objects that fully define the class within the context of the problem. Attributes describe a class that has been selected for inclusion in the requirements model. In essence, it is the attributes that define the class—that clarify what is meant by the class in the context of the problem space.

To develop a meaningful set of attributes for an analysis class, you should study each use case And select those “things” that reasonably “belong” to the class.

Defining Operations: Operations define the behavior of an object. Although many different types of operations exist, they can generally be divided into four broad categories: (1) operations that manipulate data in some way. (2) operations that perform a computation, (3) operations that inquire about the state of an object, and (4) operations that monitor an object

for the occurrence of a controlling event. These functions are accomplished by operating on attributes and/or associations. Therefore, an operation must have “knowledge” of the nature of the class’ attributes and associations.

As a first iteration at deriving a set of operations for an analysis class, you can again study a processing narrative (or use case) and select those operations that reasonably belong to the class. To accomplish this, the grammatical parse is again studied and verbs are isolated. Some of these verbs will be legitimate operations and can be easily connected to a specific class.

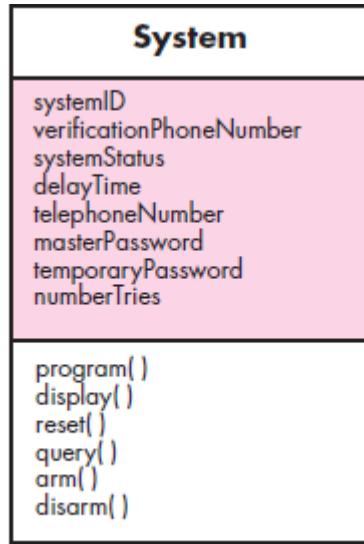


Fig 6.9: Class diagram for the System class

Class-Responsibility-Collaborator (CRC) Modeling: Class-responsibility-collaborator (CRC) modeling provides a simple means for identifying and organizing the classes that are relevant to system or product requirements.

One purpose of CRC cards is to fail early, to fail often, and to fail inexpensively. It is a lot cheaper to tear up a bunch of cards than it would be to reorganize a large amount of source code.

Ambler describes CRC modeling in the following way:

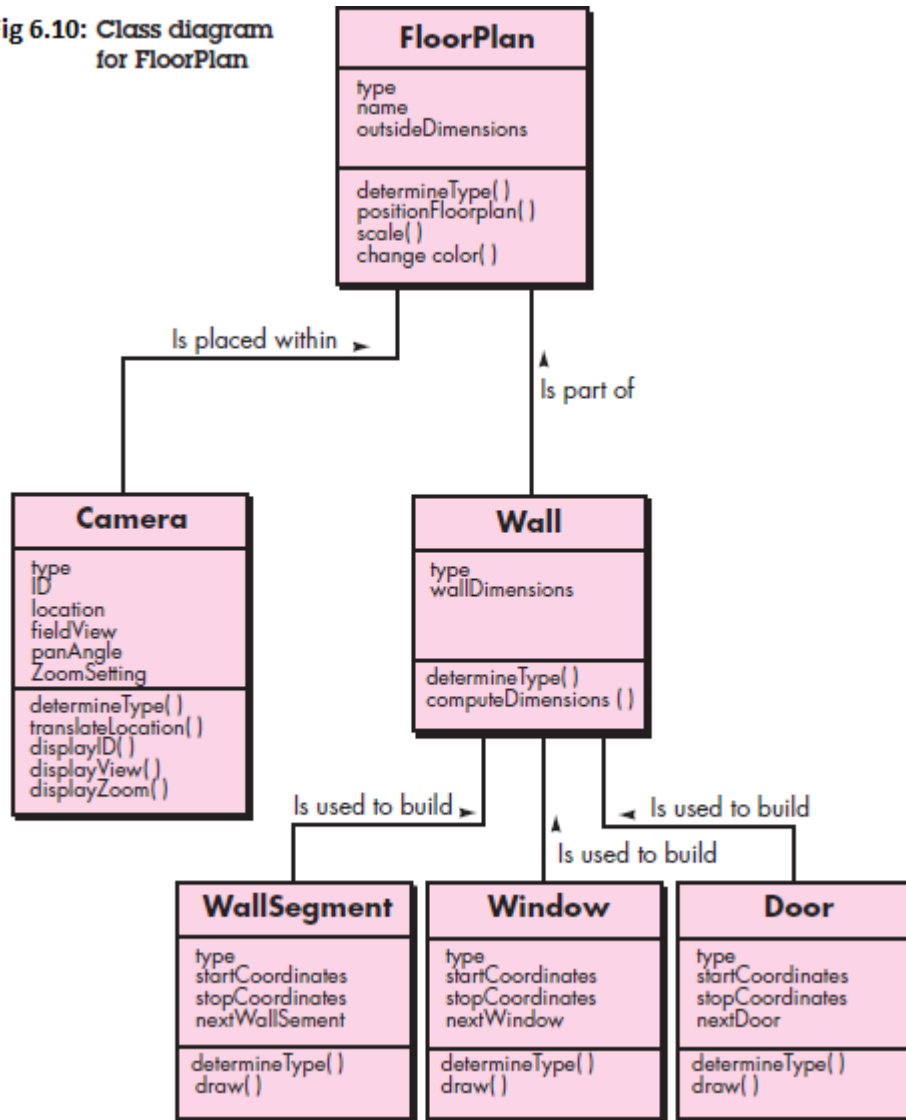
A CRC model is really a collection of standard index cards that represent classes. The cards are divided into three sections. Along the top of the card you write the name of the class. In the body of the card you list the class responsibilities on the left and the collaborators on the right.

In reality, the CRC model may make use of actual or virtual index cards. The intent is to develop an organized representation of classes. Responsibilities are the attributes and operations that are relevant for the class. Stated simply, a responsibility is “anything the class knows or does”. Collaborators are those classes that are required to provide a class with the information needed to complete a responsibility.

In general, collaboration implies either a request for information or a request for some action.

A simple CRC index card for the Floor Plan class is illustrated in Figure 6.11. The list of responsibilities shown on the CRC card is preliminary and subject to additions or modification. The classes Wall and Camera are noted next to the responsibility that will require their collaboration.

Fig 6.10: Class diagram for FloorPlan



Classes. Basic guidelines for identifying classes and objects were presented earlier in this chapter. The taxonomy of class types presented in Section 6.5.1 can be extended by considering the following categories:

- **Entity classes**, also called model or business classes, are extracted directly from the statement of the problem. These classes typically represent things that are to be stored in a database and persist throughout the duration of the application.
- **Boundary classes** are used to create the interface (e.g., interactive screen or printed reports) that the user sees and interacts with as the software is used. Entity objects contain information

That is important to users, but they do not display themselves. Boundary classes are designed with the responsibility of managing the way entity objects are represented to users.

Class: FloorPlan	
Description	
Responsibility:	Collaborator:
Defines floor plan name/type	
Manages floor plan positioning	
Scales floor plan for display	
Scales floor plan for display	
Incorporates walls, doors, and windows	Wall
Shows position of video cameras	Camera

Fig 6.11: A CRC model index card

- Controller classes manage a “unit of work” from start to finish. That is, controller classes can be designed to manage (1) the creation or update of entity objects, (2) the instantiation of boundary objects as they obtain information from entity objects, (3) complex communication between sets of objects, (4) validation of data communicated between objects or between the user and the application. In general, controller classes are not considered until the design activity has begun.

Responsibilities. The five guidelines for allocating responsibilities to classes:

1. System intelligence should be distributed across classes to best address the needs of the problem. Every application encompasses a certain degree of intelligence; that is, what the system knows and what it can do. This intelligence can be distributed across classes in a number of different ways. “Dumb” classes can be modeled to act as servants to a few “smart” classes.

To determine whether system intelligence is properly distributed, the responsibilities noted on each CRC model index card should be evaluated to determine if any class has an extraordinarily long list of responsibilities. Example is aggregation of classes.

2. Each responsibility should be stated as generally as possible. This guideline implies that general responsibilities (both attributes and operations) should reside high in the class hierarchy

3. Information and the behavior related to it should reside within the same class. This achieves the object-oriented principle called encapsulation. Data and the processes that manipulate the data should be packaged as a cohesive unit.

4. Information about one thing should be localized with a single class, not distributed across multiple classes. A single class should take on the responsibility for storing and manipulating a specific type of information. This responsibility should not, in general, be shared

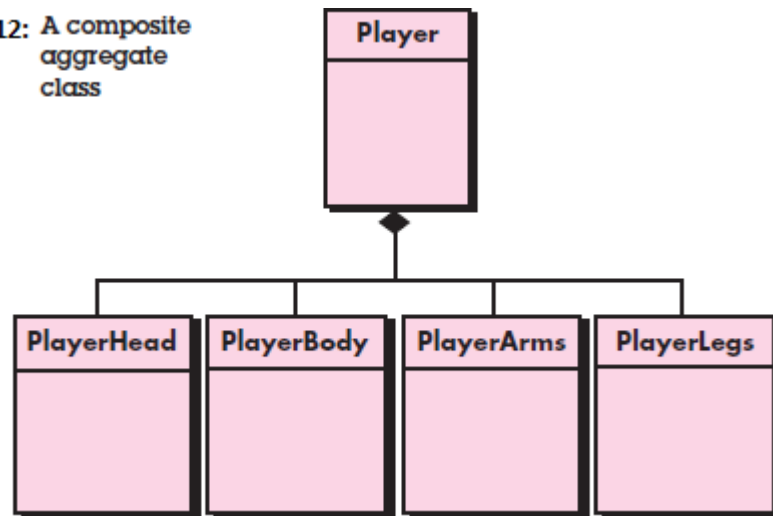
across a number of classes. If information is distributed, software becomes more difficult to maintain and more challenging to test.

**5.** Responsibilities should be shared among related classes, when appropriate. There are many cases in which a variety of related objects must all exhibit the same behavior at the same time.

Collaborations. Classes fulfill their responsibilities in one of two ways: (1) A class can use its own operations to manipulate its own attributes, thereby fulfilling a particular responsibility, or (2) a class can collaborate with other classes.

To help in the identification of collaborators, you can examine three different generic relationships between classes (1) the is-part-of relationship, (2) the has-knowledge-of relationship, and (3) the depends-upon relationship.

**Fig 6.12:** A composite aggregate class



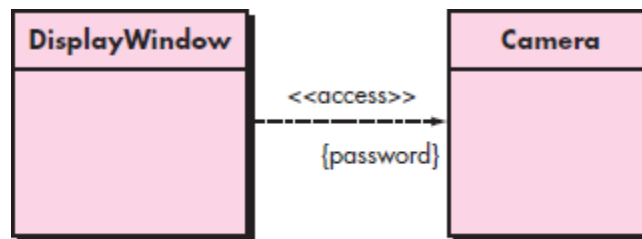
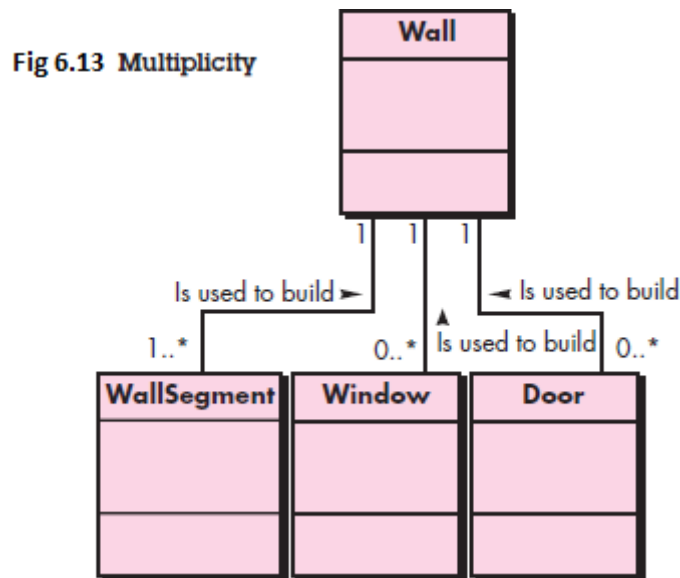
When a complete CRC model has been developed, stakeholders can review the model using the following approach

1. All participants in the review are given a subset of the CRC model index cards. Cards that collaborate should be separated
2. All use-case scenarios (corresponding use-case diagrams) should be organized into categories.
3. The review leader reads the use case deliberately.
4. When the token is passed, the holder of the Sensor card is asked to describe the responsibilities noted on the card.
5. If the responsibilities and collaborations noted on the index cards cannot accommodate the use case, modifications are made to the cards.

This continues until the use case is finished. When all use cases have been reviewed, requirements modeling continue.

Associations and Dependencies: In many instances, two analysis classes are related to one another in some fashion, much like two data objects may be related to one another. In UML these relationships are called *associations*.

In some cases, an association may be further defined by indicating multiplicity. Referring to The multiplicity constraints are illustrated in Figure 6.13, where “one or more” is represented using 1..\*, and “0 or more” by 0..\*. In UML, the asterisk indicates an unlimited upper bound on the range.



**Fig 6.14: Dependencies**

Analysis Packages: An important part of analysis modeling is *categorization*. That is, various elements of the analysis model are categorized in a manner that *packages* them as a grouping—called an *analysis package*—that is given a representative name.

For example, Classes such as Tree, Landscape, Road, Wall, Bridge, Building, and VisualEffect might fall within this category. Others focus on the characters within the game, describing their physical features, actions, and constraints.

These classes can be grouped in analysis packages as shown in Figure 6.15. The *plus sign* preceding the analysis class name in each package indicates that the classes have public visibility and are therefore accessible from other packages.

Although they are not shown in the figure, other symbols can precede an element within a package. A minus sign indicates that an element is hidden from all other packages and a # symbol indicates that an element is accessible only to packages contained within a given package.

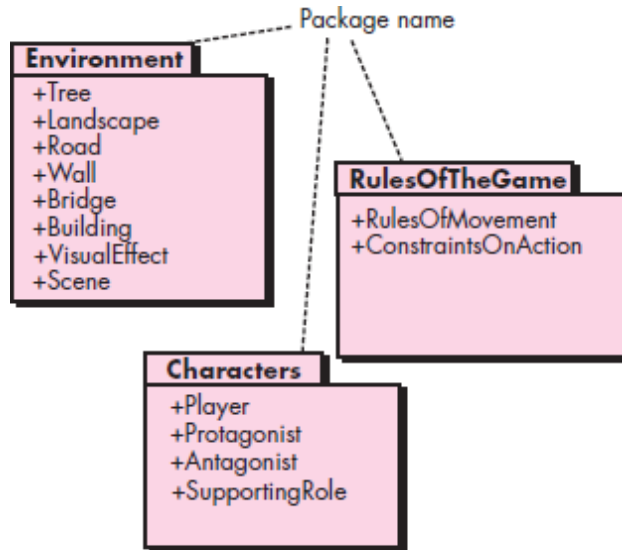


Fig 6.15: Packages

### 3.6 Requirements Modeling

The requirements model has many different dimensions. Flow oriented models, behavioral models, and the special requirements analysis considerations that come into play when WebApps are developed. Each of these modeling representations supplements the use cases, data models, and class based models.

### 3.7 FLOW-ORIENTED MODELING

Although the data flow diagram (DFD) and related diagrams and information are not a formal part of UML, they can be used to complement UML diagrams and provide additional insight into system requirements and flow.

The DFD takes an input-process-output view of a system. That is, data objects flow into the software, are transformed by processing elements, and resultant data objects flow out of the software. Data objects are represented by labeled arrows, and transformations are represented

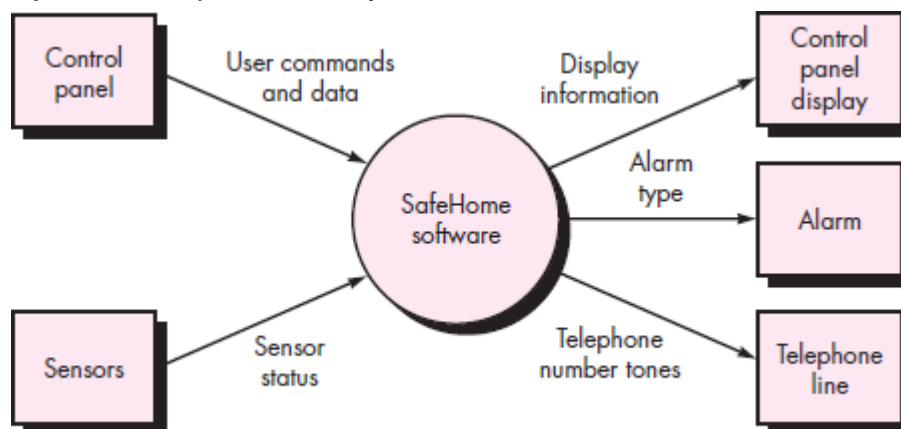


Fig 7.1: Context level DFD for safeHome security function

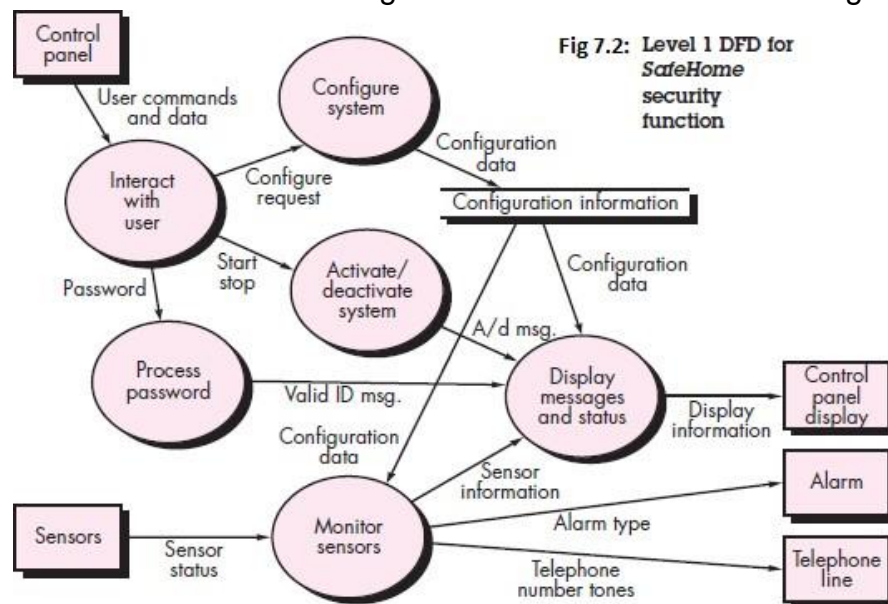
by circles (also called bubbles). The DFD is presented in a hierarchical fashion. That is, the first data flow model (sometimes called a level 0 DFD or context diagram) represents the system as a whole. Subsequent data flow diagrams refine the context diagram, providing increasing detail with each subsequent level.

Creating a Data Flow Model: The data flow diagram enables you to develop models of the information domain and functional domain. As the DFD is refined into greater levels of detail, you perform an implicit functional decomposition of the system.

A few simple guidelines of a data flow diagram:

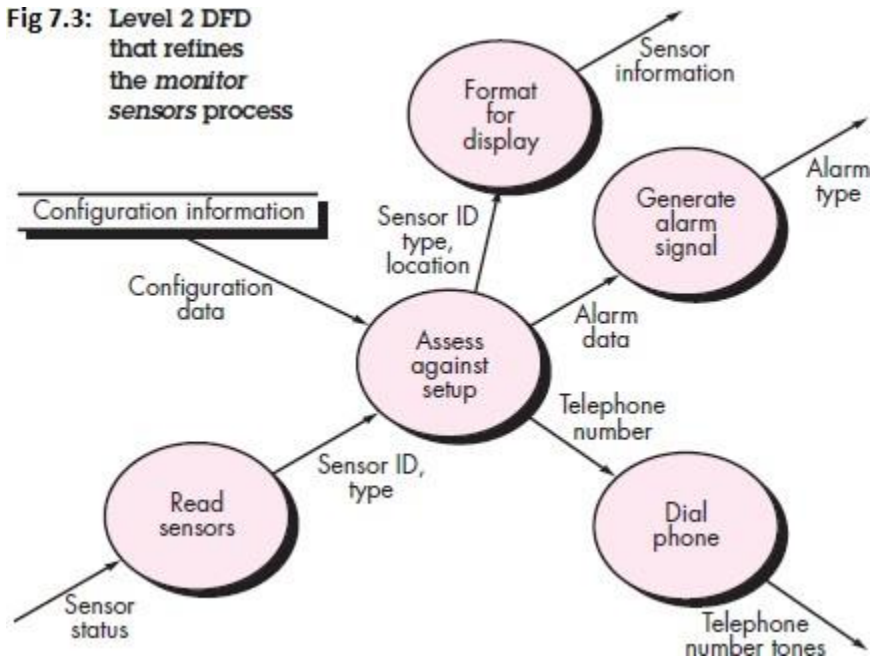
- (1) the level 0 data flow diagram should depict the software/system as a single bubble;
- (2) primary input and output should be carefully noted;
- (3) refinement should begin by isolating candidate processes, data objects, and data stores to be represented at the next level;
- (4) all arrows and bubbles should be labeled with meaningful names;
- (5) information flow continuity must be maintained from level to level, 2 and
- (6) One bubble at a time should be refined. There is a natural tendency to overcomplicate the data flow diagram. This occurs when you attempt to show too much detail too early or represent procedural aspects of the software in lieu of information flow.

Creating a Control Flow Model: For some types of applications, the data model and the data flow diagram are all that is necessary to obtain meaningful insight into software requirements. However, a large class of applications are “driven” by events rather than data, produce control information rather than reports or displays, and process information with heavy concern for time and performance. Such applications require the use of control flow modeling in addition to data flow modeling.





**Fig 7.3: Level 2 DFD that refines the monitor sensors process**



An event or control item is implemented as a Boolean value (e.g., true or false, on or off, 1 or 0) or a discrete list of conditions (e.g., empty, jammed, full). To select potential candidate events, the following guidelines are suggested:

- List all sensors that are “read” by the software.
- List all interrupt conditions.
- List all “switches” that are actuated by an operator.
- List all data conditions.
- Recalling the noun/verb parse that was applied to the processing narrative, review all “control items” as possible control specification inputs/outputs.
- Describe the behavior of a system by identifying its states, identify how each state is reached, and define the transitions between states.
- Focus on possible omissions—a very common error in specifying control

The Control Specification: A control specification (CSPEC) represents the behavior of the system in two different ways. The CSPEC contains a state diagram that is a sequential specification of behavior. It can also contain a program activation table—a combinatorial specification of behavior.

Figure 7.4 depicts a preliminary state diagram for the level 1 control flow model for SafeHome.

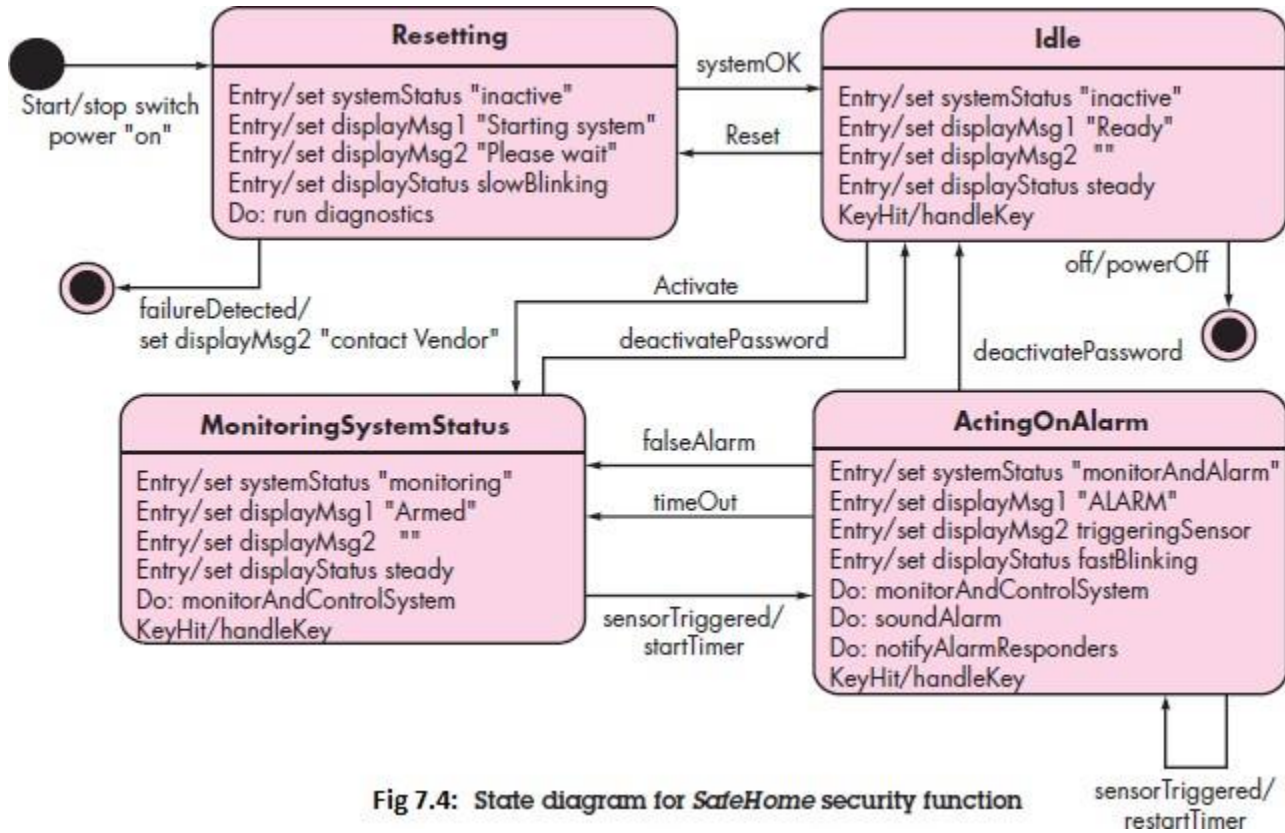


Fig 7.4: State diagram for *SafeHome* security function

The Process Specification: The PSPEC is a “minispecification” for each transform at the lowest refined level of a DFD. The process specification (PSPEC) is used to describe all flow model processes that appear at the final level of refinement. The content of the process specification can include narrative text, a program design language (PDL) description of the process algorithm, mathematical equations, tables, or UML activity diagrams.

<u>input events</u>						
sensor event	0	0	0	0	1	0
blink flag	0	0	1	1	0	0
start stop switch	0	1	0	0	0	0
display action status complete	0	0	0	1	0	0
in-progress	0	0	1	0	0	0
time out	0	0	0	0	0	1
<u>output</u>						
alarm signal	0	0	0	0	1	0
<u>process activation</u>						
monitor and control system	0	1	0	0	1	1
activate/deactivate system	0	1	0	0	0	0
display messages and status	1	0	1	1	1	1
interact with user	1	0	0	1	0	1

Fig 7.5: Process activation table for *SafeHome* security function

### 3.8 CREATING A BEHAVIORAL MODEL

We can represent the behavior of the system as a function of specific events and time. The behavioral model indicates how software will respond to external events or stimuli. To create the model, you should perform the following steps:

1. Evaluate all use cases to fully understand the sequence of interaction within the system.
2. Identify events that drive the interaction sequence and understand how these events relate to specific objects.
3. Create a sequence for each use case.
4. Build a state diagram for the system.
5. Review the behavioral model to verify accuracy and consistency.

Identifying Events with the Use Case: The use case represents a sequence of activities that involves actors and the system. In general, an event occurs whenever the system and an actor exchange information. A use case is examined for points of information exchange.

The underlined portions of the use case scenario indicate events. An actor should be identified for each event; the information that is exchanged should be noted, and any conditions or constraints should be listed. Once all events have been identified, they are allocated to the objects involved. Objects can be responsible for generating events or recognizing events that have occurred elsewhere.

State Representations:

In the context of behavioral modeling, two different characterizations of states must be considered:

- (1) The state of each class as the system performs its function and
- (2) The state of the system as observed from the outside as the system performs its function.

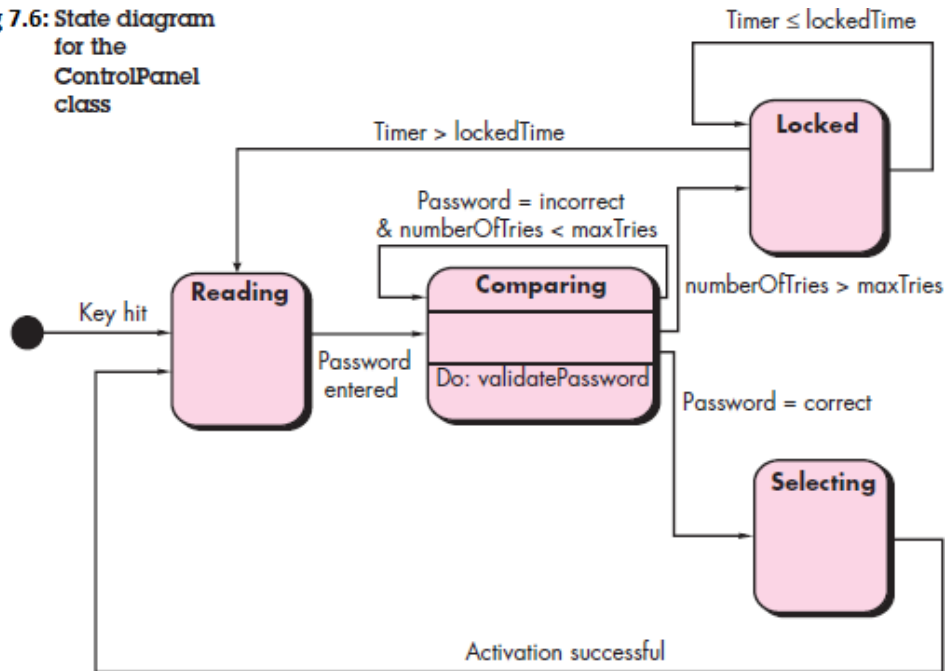
The state of a class takes on both passive and active characteristics. A passive state is simply the current status of all of an object's attributes. The active state of an object indicates the current status of the object as it undergoes a continuing transformation or processing. An event (sometimes called a trigger) must occur to force an object to make a transition from one active state to another. Two different behavioral representations are discussed in the paragraphs that follow.

- 1) The first indicates how an individual class changes state based on external events
- 2) The second shows the behavior of the software as a function of time.

State diagrams for analysis classes. One component of a behavioral model is a UML state diagram<sup>9</sup> that represents active states for each class and the events (triggers) that cause changes between these active states. Figure 7.6 illustrates a state diagram for the Control Panel object in the Safe Home security function.

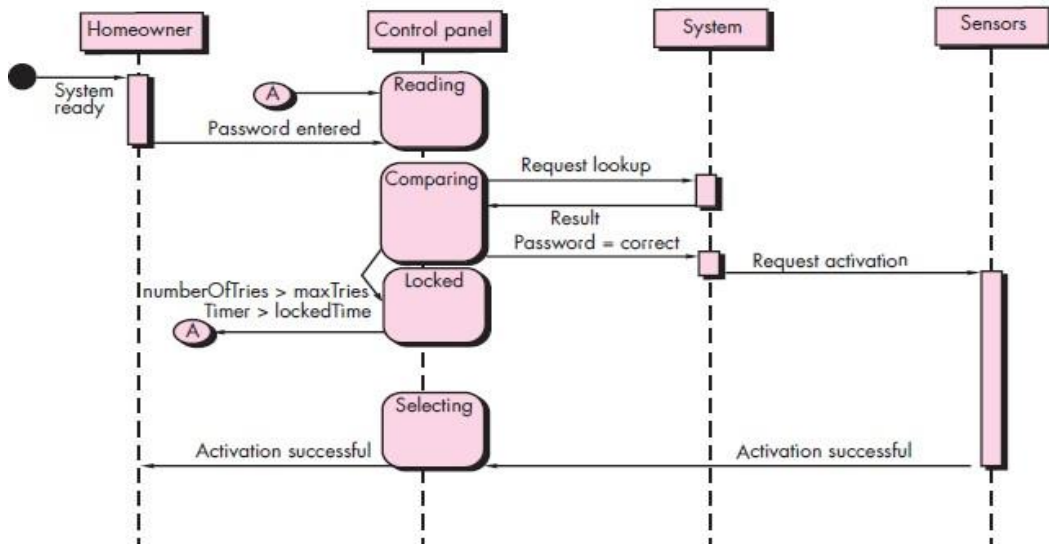
Each arrow shown in Figure 7.6 represents a transition from one active state of an object to another. The labels shown for each arrow represent the event that triggers the transition.

Fig 7.6: State diagram for the ControlPanel class



Sequence diagrams. The second type of behavioral representation, called a sequence diagram in UML, indicates how events cause transitions from object to object. Once events have been identified by examining a use case, the modeler creates a sequence diagram—a representation of how events cause flow from one object to another as a function of time. In essence, the sequence diagram is a shorthand version of the use case. It represents key classes and the events that cause behavior to flow from class to class. Figure 7.7 illustrates a partial sequence diagram for the Safe Home security function.

Fig 7.7: Sequence diagram (partial) for the SafeHome security function



### 3.9 PATTERNS FOR REQUIREMENTS MODELING

Software patterns are a mechanism for capturing domain knowledge in a way that allows it to be reapplied when a new problem is encountered. In some cases, the domain knowledge is applied to a new problem within the same application domain.

Once the pattern has been discovered, it is documented by describing “explicitly the general problem to which the pattern is applicable, the prescribed solution, assumptions and constraints of using the pattern in practice, and often some other information about the pattern, such as the *motivation and driving forces for using the pattern, discussion of the pattern’s advantages and disadvantages, and references to some known examples of using that pattern in practical applications*”.

The pattern can be reused when performing requirements modeling for an application within a domain. Once an appropriate pattern is selected, it is integrated into the requirements model by reference to the pattern name.

Discovering Analysis Patterns: The requirements model is comprised of a wide variety of elements: scenario-based (use cases), data-oriented (the data model), class-based, flow- oriented, and behavioral.

Each of these elements examines the problem from a different perspective, and each provides an opportunity to discover patterns that may occur throughout an application domain, or by analogy, across different application domains.

The most basic element in the description of a requirements model is the use case. A semantic analysis pattern (SAP) “is a pattern that describes a small set of coherent use cases that together describe a basic generic application”.

Consider the following preliminary use case for software required to control and monitor a real-view camera and proximity sensor for an automobile:

Use case: Monitor reverse motion

Description: When the vehicle is placed in reverse gear, the control software enables a video feed from a rear-placed video camera to the dashboard display.

This use case implies a variety of functionality that would be refined and elaborated during requirements gathering and modeling.

A Requirements Pattern Example: Actuator-Sensor One of the requirements of the SafeHome security function is the ability to monitor security sensors.

Pattern Name. Actuator-Sensor

Intent. Specify various kinds of sensors and actuators in an embedded system.

Motivation. Embedded systems usually have various kinds of sensors and actuators. These sensors and actuators are all either directly or indirectly connected to a control unit.

Constraints

- Each passive sensor must have some method to read sensor input and attributes that represent the sensor value.
- Each active sensor must have capabilities to broadcast update messages when its value changes.
- Each active sensor should send a life tick, a status message issued within a specified time frame, to detect malfunctions.

Applicability. Useful in any system in which multiple sensors and actuators are present.

Structure. A UML class diagram for the Actuator-Sensor pattern is shown in Figure 7.8.

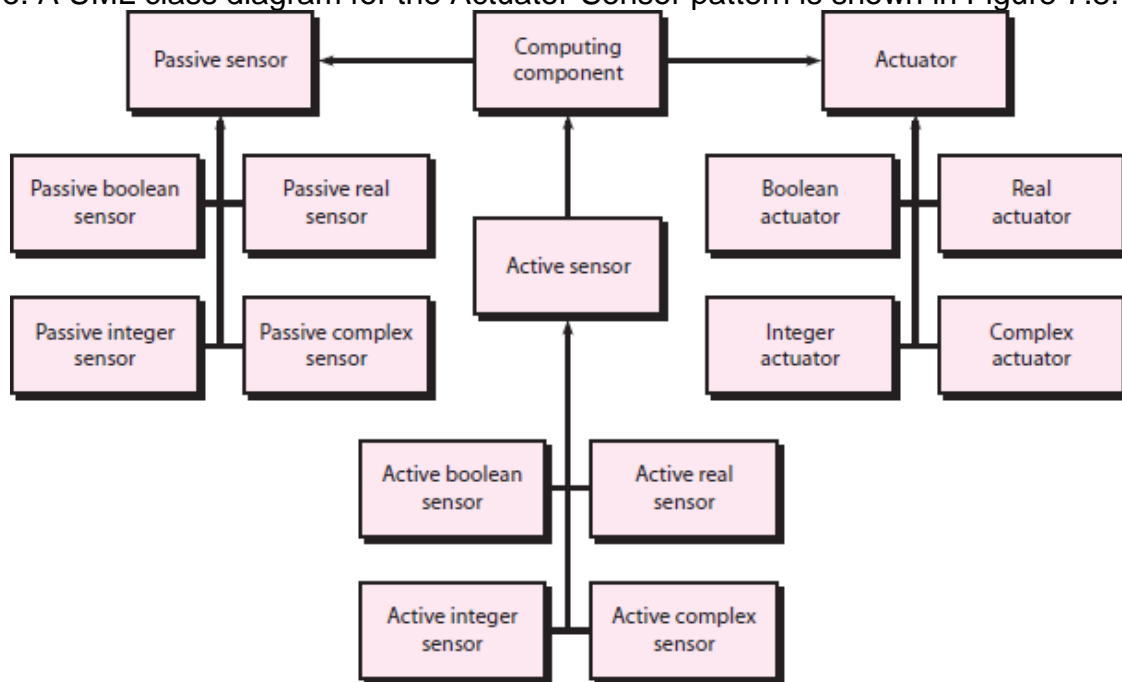


Fig 7.8: UML sequence diagram for the Actuator-Sensor pattern.

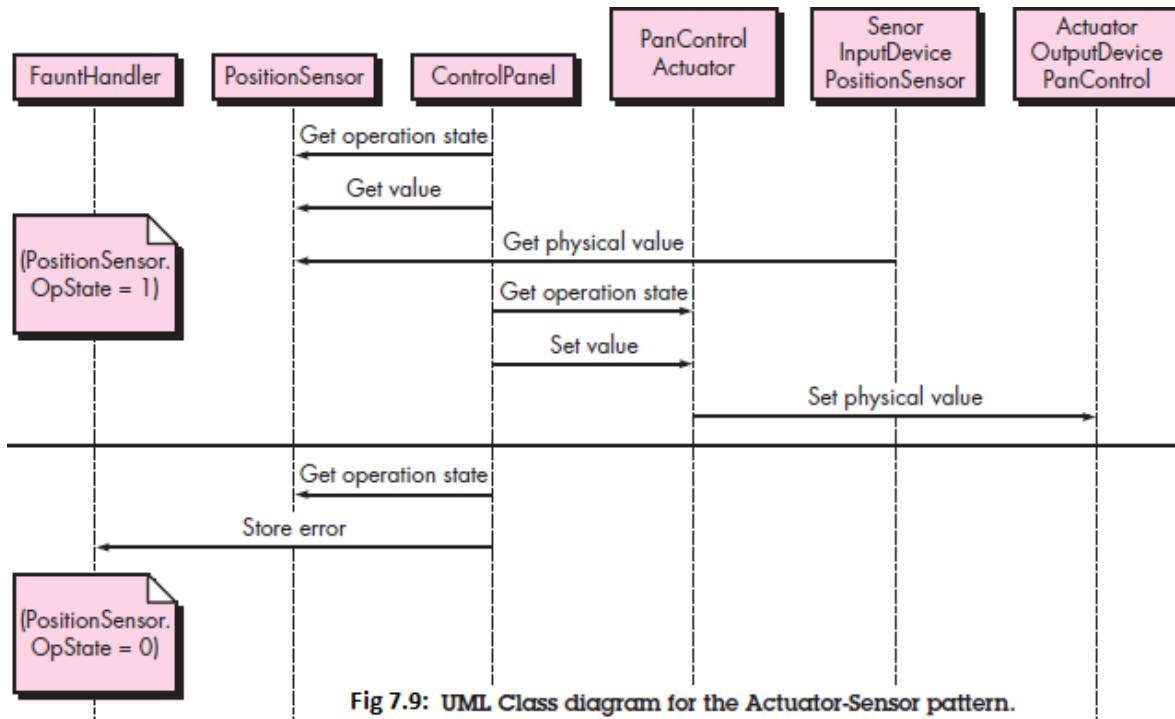
Behavior. Figure 7.9 presents a UML sequence diagram for an example of the Actuator-Sensor pattern as it might be applied for the SafeHome function that controls the positioning (e.g., pan, zoom) of a security camera.

Participants. Patterns description “itemizes the classes/objects that are included in the requirements pattern” and describes the responsibilities of each class/object (Figure 7.8). An abbreviated list follows:

- Passive Sensor abstract: Defines an interface for passive sensors.
- PassiveBooleanSensor: Defines passive Boolean sensors.
- PassiveIntegerSensor: Defines passive integer sensors.

Collaborations. This describes how objects and classes interact with one another and how each carries out its responsibilities.

- When the Computing Component needs to update the value of a Passive Sensor, it queries the sensors, requesting the value by sending the appropriate message.



### Consequences

1. Sensor and actuator classes have a common interface.
2. Class attributes can only be accessed through messages, and the class decides whether or not to accept the message. For example, if a value of an actuator is set above a maximum value, then the actuator class may not accept the message, or it might use a default maximum value.
3. The complexity of the system is potentially reduced because of the uniformity of interfaces for actuators and sensors.

### 3.10 REQUIREMENTS MODELING FOR WEBAPPS

The Web development process must be agile, and analysis is time consuming

How Much Analysis Is Enough?: The degree to which requirements modeling for WebApps are emphasized depends on the following factors:

- Size and complexity of WebApp increment.
- Number of stakeholders
- Size of the WebApp team.
- Degree to which members of the WebApp team have worked together before
- Degree to which the organization's success is directly dependent on the success of the WebApp.

Requirements Modeling Input: An agile version of the generic software process can be applied when WebApps are engineered. The process incorporates a communication activity that

Identifies stakeholders and user categories, the business context, defined informational and applicative goals, general WebApp requirements, and usage scenarios—information that becomes input to requirements modeling. This information is represented in the form of natural language descriptions, rough outlines, sketches, and other informal representations.

To summarize, the inputs to the requirements model will be the information collected during the communication activity—anything from an informal e-mail to a detailed project brief complete with comprehensive usage scenarios and product specifications.

**Requirements Modeling Output:** Requirements analysis provides a disciplined mechanism for representing and evaluating WebApp content and function. While the specific models depend largely upon the nature of the WebApp, there are five main classes of models:

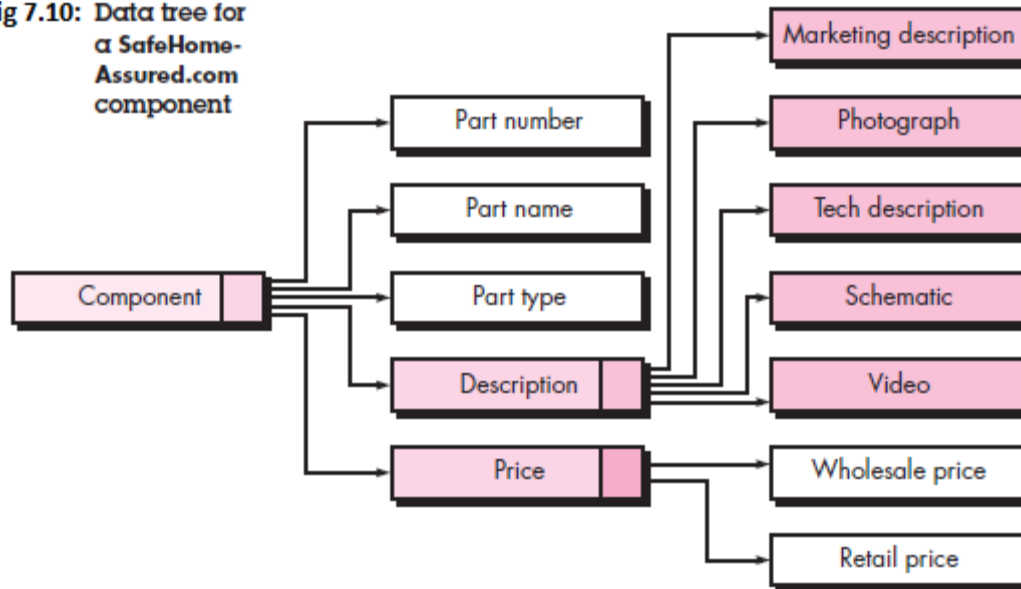
- Content model—identifies the full spectrum of content to be provided by the WebApp. Content includes text, graphics and images, video, and audio data.
- Interaction model—describes the manner in which users interact with the WebApp.
- Functional model—defines the operations that will be applied to WebApp content and describes other processing functions that are independent of content but necessary to the end user.
- Navigation model—defines the overall navigation strategy for the WebApp.
- Configuration model—describes the environment and infrastructure in which the WebApp resides.

**Content Model for WebApps:** The content model contains structural elements that provide an important view of content requirements for a WebApp. These structural elements encompass content objects and all analysis classes—user-visible entities that are created or manipulated as a user interacts with the WebApp.

Content can be developed prior to the implementation of the WebApp, while the WebApp is being built, or long after the WebApp is operational. In every case, it is incorporated via navigational reference into the overall WebApp structure. A content object might be a textual description of a product, an article describing a news event, an action photograph taken at a sporting event, a user's response on a discussion forum, an animated representation of a corporate logo, a short video of a speech, or an audio overlay for a collection of presentation slides. The content objects might be stored as separate files, embedded directly into Web pages, or obtained dynamically from a database. In other words, a content object is any item of cohesive information that is to be presented to an end user. Content objects can be determined directly from use cases by examining the scenario description for direct and indirect references to content. Refer to figure 7.10 for content modeling.



Fig 7.10: Data tree for a SafeHome-Assured.com component



A data tree can be created for any content that is composed of multiple content objects and data items. The data tree is developed in an effort to define hierarchical relationships among content objects and to provide a means for reviewing content so that omissions and inconsistencies are uncovered before design commences. In addition, the data tree serves as the basis for content design.

Interaction Model for WebApps: The vast majority of WebApps enable a “conversation” between an end user and application functionality, content, and behavior. This conversation can be described using an interaction model that can be composed of one or more of the following elements: (1) use cases, (2) sequence diagrams, (3) state diagrams,<sup>16</sup> and/or (4) user interface prototypes.

In many instances, a set of use cases is sufficient to describe the interaction at an analysis level. However, when the sequence of interaction is complex and involves multiple analysis classes or many tasks, it is sometimes worthwhile to depict it using a more rigorous diagrammatic form. Because WebApp construction tools are plentiful, relatively inexpensive, and functionally powerful, it is best to create the interface prototype using such tools.

Functional Model for WebApps: Many WebApps deliver a broad array of computational and manipulative functions that can be associated directly with content and that are often a major goal of user-WebApp interaction. For this reason, functional requirements must be analyzed, and when necessary, modeled.

The functional model addresses two processing elements of the WebApp, each representing a different level of procedural abstraction:

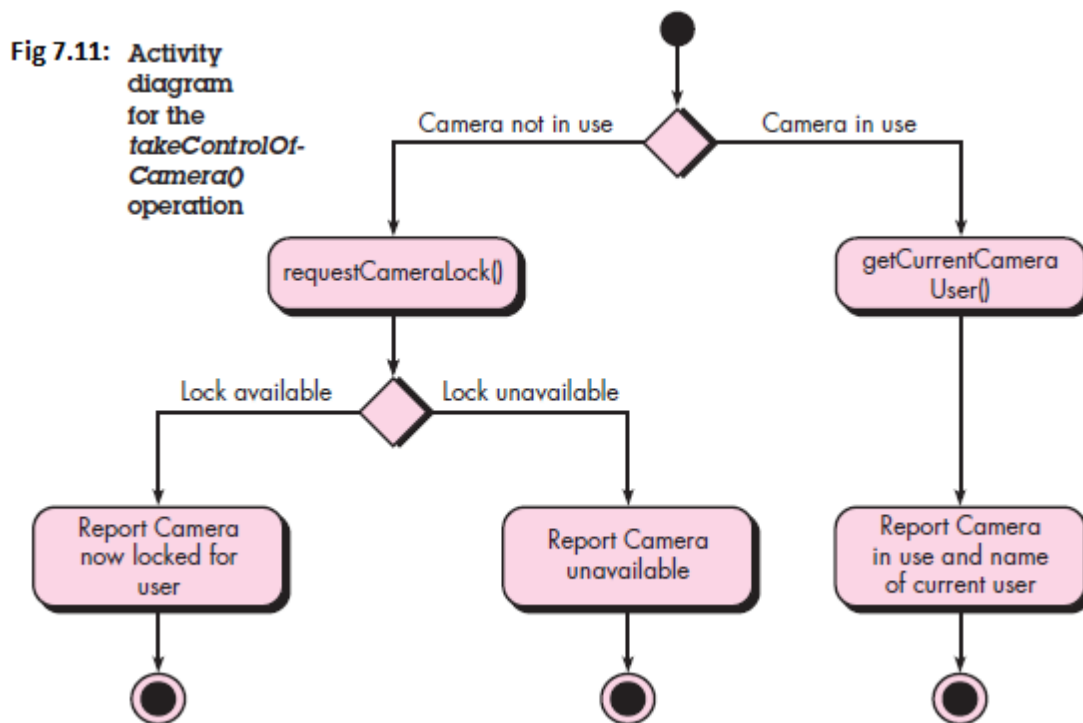
(1) user-observable functionality that is delivered by the WebApp to end users, and

(2) The operations contained within analysis classes that implement behaviors associated with the class.

User-observable functionality encompasses any processing functions that are initiated directly by the user. These functions may actually be implemented using operations within analysis classes, but from the point of view of the end user, the function is the visible outcome.

At a lower level of procedural abstraction, the requirements model describes the processing to be performed by analysis class operations. These operations manipulate class attributes and are involved as classes collaborate with one another to accomplish some required behavior.

Regardless of the level of procedural abstraction, the UML activity diagram can be used to represent processing details.



Configuration Models for WebApps: In some cases, the configuration model is nothing more than a list of server-side and client-side attributes. However, for more complex WebApps, a variety of configuration complexities (e.g., distributing load among multiple servers, caching architectures, remote databases, multiple servers serving various objects on the same Web page) may have an impact on analysis and design.

The UML deployment diagram can be used in situations in which complex configuration architectures must be considered.

Navigation Modeling: Navigation modeling considers how each user category will navigate from one WebApp element to another. The following questions should be considered:

- Should certain elements be easier to reach (require fewer navigation steps) than others? What is the priority for presentation?
- Should certain elements be emphasized to force users to navigate in their direction?
- How should navigation errors be handled?
- Should navigation to related groups of elements be given priority over navigation to a specific element?
- Should navigation be accomplished via links, via search-based access, or by some other means?
- Should certain elements be presented to users based on the context of previous navigation actions?
- Should a navigation log be maintained for users?
- Should a full navigation map or menu be available at every point in a user's interaction?
- Should navigation design be driven by the most commonly expected user behaviors or by the perceived importance of the defined WebApp elements?
- Can a user "store" his previous navigation through the WebApp to expedite future usage?
- For which user category should optimal navigation be designed?
- How should links external to the WebApp be handled? Overlaying the existing browser window? As a new browser window? As a separate frame?